

NetApp Syncsort Integrated Backup

Simple, Integrated, Proven

Solving Data Protection. Finally.

Backup technologies have had a tough time keeping up with explosive data growth and virtualization. High-impact agents that copy files to disk or tape break down in the face of massive consolidation and shared physical resources on hypervisors. Point solutions for virtual environments or deduplication merely add complexity. NetApp Syncsort Integrated Backup goes beyond deduplication to resolve all critical data protection needs. It delivers the fastest, easiest to use and most resource efficient data protection solution for physical and virtual servers running in heterogeneous environments.

Fundamentally Different

NetApp Syncsort Integrated Backup revolutionizes backup for the new, virtualized world of IT. It uses snapshots and block replication to make backups 95% faster, 99% more reliable, and 90% smaller on disk — for any primary storage environment.

NetApp Syncsort Integrated Backup ties Syncsort and NetApp software with NetApp high performance disk storage offering customers revolutionary change in data protection. It combines “zero impact backup”, data deduplication, instant restore, data replication and support for disk, tape, and physical and virtual servers. It’s flexible enough to work in heterogeneous storage environments while consolidating backup processing to a single user interface.

Maximizing Virtualization ROI

Within the next five years the vast majority of servers will be virtual. The value equation of virtualization is simple: the more virtual machines (VMs) you can put on a single physical server, the more you save.

Traditional backup creates significant system impact across CPU, network bandwidth and disk I/O. Since these resources are shared on hypervisors, there is little spare capacity for backup processing. This limits VM densities to accommodate backup — reducing the return on virtualization.

What’s more, the massive consolidation achievable through virtualization can make backups run beyond existing windows.

NetApp Syncsort Integrated Backup unleashes ROI by reducing the impact of backup processing as much as 90% or more. This means you can maximize the number of VMs

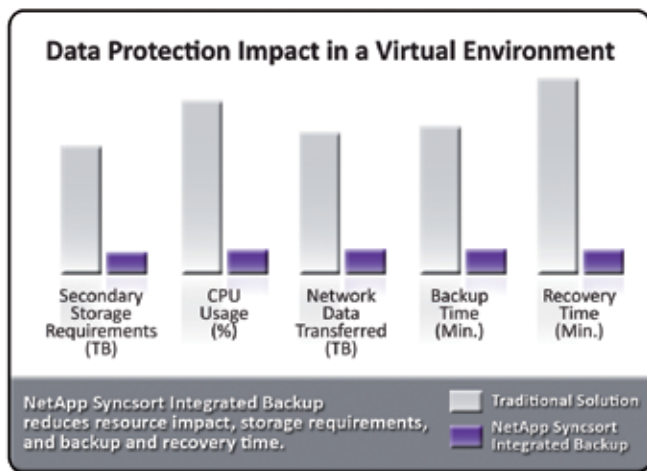
Q: NETAPP HAS CORE TECHNOLOGY FOR BLOCK-LEVEL DATA PROTECTION. WHAT DOES SYNCSORT ADD?

A: SYNCSORT LEVERAGES NETAPP CORE TECHNOLOGY WHILE ADDING THE FOLLOWING:

- Heterogeneous application support for Exchange, Oracle, SQL, SharePoint
- Deeper integration with VMware for advanced, automated recovery scenarios
- Catalog search and restore across disk-based backup
- A catalog that spans both disk and tape
- Recovery from SnapMirror DR destinations
- Automated Bare Metal Recovery

per machine, getting the most value out of your investment. And the block level replication means that once the first full copy is complete, only new or changed data gets moved (and stored) — resulting in 95% faster backups.

Integrated Backup supports physical and virtual servers as well as Exchange, SQL, Oracle and SharePoint in heterogeneous storage environments. So it effectively protects data while applications are being transitioned. Integrated Backup also includes tools for fast and efficient physical-to-virtual migration (P2V) to help speed server virtualization projects.



Limiting Data Loss, Saving Information

When critical corporate data is lost, the revenue, productivity, or legal impact is always significant.

Once-a-day backups expose organizations to large gaps of lost data. NetApp Syncsort Integrated Backup puts the lid on data loss by allowing you to backup critical applications multiple times per day, even as often as every 15 minutes, while still limiting the amount of data stored.

NetApp Syncsort Integrated Backup's ultra fast block-level backup method reduces backup times from hours to minutes. Backups complete in a fraction of the time, yet every backup captures a full disk image, complete with

application consistent data. NetApp Syncsort Integrated Backup enables you to create multiple recovery points to minimize data loss.

Eliminating the "Recovery Window"

When a key application suffers a data loss event, the "recovery window" clock immediately starts ticking: every minute that passes can mean lost revenue or lost productivity.

NetApp Syncsort Integrated Backup collapses the recovery window by providing instant access to data. Every backup exists in a native format snapshot that can be directly accessed within minutes, no matter the size of the data set. Lost files are easy to find because snapshots are cataloged and searchable. Snapshots can be mapped to stand in for lost drives. Entire failed systems can be recovered as virtual machines or restored to new physical systems using Bare Metal Recovery.

NetApp Syncsort Integrated Backup has multiple recovery paths, each optimized for a particular data loss scenario. Site-to-site data replication is included, allowing duplicate data sets to be sent via IP networks to disaster recovery sites, hosted facilities, etc.

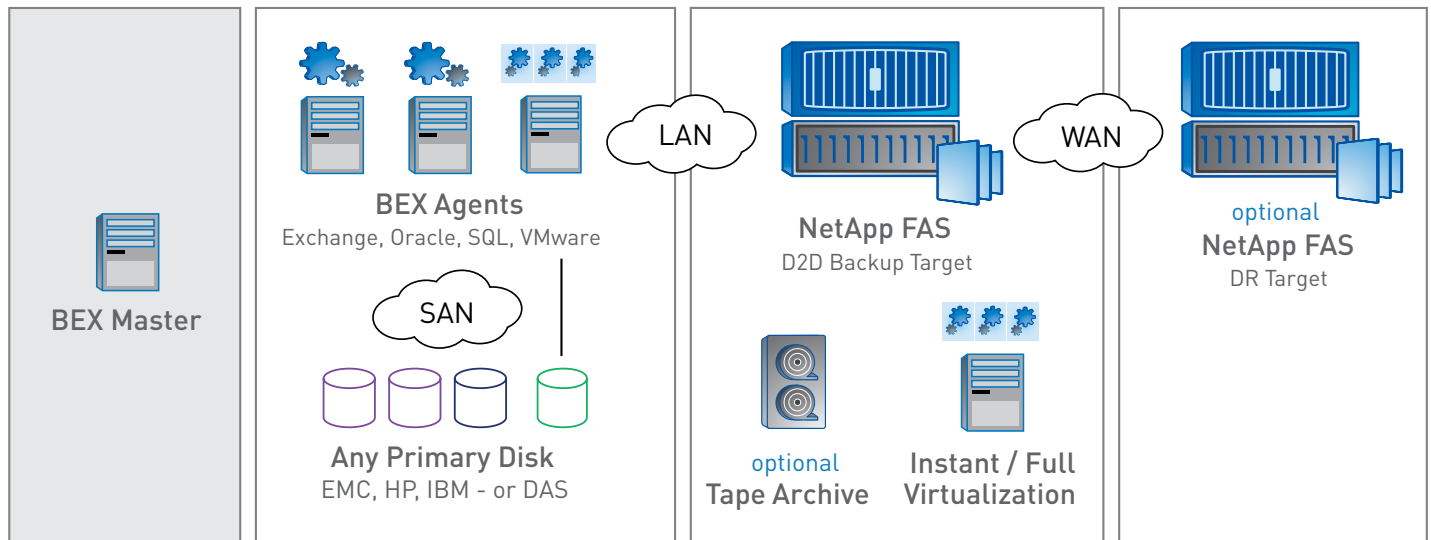
Cost Savings Across the Board

NetApp Syncsort Integrated Backup was designed with the small and medium enterprise in mind. With limited IT staffs and even more limited budgets, cost consciousness is always top of mind.

NetApp Syncsort Integrated Backup drives cost savings across the board. It begins by using fewer moving parts than traditional backup. NetApp Syncsort Integrated Backup agents send client data directly to NetApp storage, without the need for any other server in the data path. This reduces deployment time, complexity and cost.

Storage savings are maximized by tackling the problem on two fronts simultaneously. Client-side data reduction

NetApp Syncsort Integrated Backup



reduces the amount of data sent over the wire and stored, while target-side data deduplication eliminates any redundant data blocks that might exist across backup sets.

NetApp Syncsort Integrated Backup is a disk-to-disk backup solution. But it can also spin data out to tape. Integrated Backup extends retention on disk to cut tape acquisition, storage and shipping costs. And management across disk and tape reduces administrative overhead.

The largest hidden cost of backup is often management, and much of that time is spent dealing with backup failures. Unlike traditional backup solutions that can have failure rates as high as one in every three backups, Integrated Backup customers report success rates of 99% or more — and nearly eliminate backup trouble shooting and re-runs.

Integrated, single-pane-of-glass management with an easy and intuitive user interface makes data protection simple and reliable, freeing IT engineers to innovate rather than spend time on mundane operational tasks.

Finally, NetApp Syncsort Integrated Backup uses a capacity based pricing model that eliminates the constant need to pay for licenses every time a server is added. This is especially useful in virtual environments where new servers can be deployed in minutes.

Simple, Integrated, Proven

NetApp Syncsort Integrated Backup delivers the data protection you need, in a solution that is simple, integrated and proven.

Simple: Easy to use. Easy to deploy. Simple to maintain and expand when needed.

Integrated: A seamless combination of storage and software for both local and remote data protection.


Proven: Jointly engineered by NetApp and Syncsort over five years, with proven, field-tested results in hundreds of customer sites.

Support Matrix

Supported Storage	Any block-level primary storage, both SAN and Direct Attached
Supported Client Operating Systems	Microsoft Windows: Windows 2008 R2, Windows 2008, Windows 2003, Windows 2000 Linux: RedHat Enterprise Linux, SUSE Linux Enterprise Server, CentOS (x64, x86) Sun Solaris: Solaris 10, Solaris 10 SPARC, Solaris 9 SPARC
Supported Hypervisors	VMware: ESX Server v 3.0, 4.0, 4.1 (vSphere); ESXi 3.5, 4.0, 4.1 (vSphere) Microsoft Hyper-V: v 1.0 and 2.0.
Supported Applications	Microsoft Exchange: 2000, 2003, 2007 and 2010 Microsoft SQL Server: 2000, 2005, 2008, 2008R2 Oracle: 9.x (Solaris only), 10G, 11G (on supported OS platforms) Microsoft SharePoint: 2007, 2010

Please consult www.syncsort.com for the latest support updates.

NetApp Syncsort Integrated Backup Components

Syncsort BEX software	Client agents (unlimited); Master Server; Reporting Server (optional)
NetApp Protection Pack and Advanced Pack	SnapMirror®, SnapVault Secondary, FlexClone®
NetApp FAS disk system	Up to 107 TB (usable) 

About NetApp

NetApp creates innovative storage and data management solutions that deliver outstanding cost efficiency and accelerate business breakthroughs. NetApp's passion for simplicity, innovation, and customer success helps companies around the world go further, faster. To learn more about NetApp please visit netapp.com.



Strategic Alliance Partner

About Syncsort

Syncsort is a global software company that helps the world's most successful organizations rethink the economics of data. Syncsort provides extreme data performance and rapid time to value through easy to use data integration and data protection solutions. With over 12,000 deployments, Syncsort has transformed decision making and delivered more profitable results to thousands of customers worldwide.

syncsort RETHINK THE ECONOMICS OF DATA*

50 Tice Boulevard, Woodcliff Lake, NJ 07677
201.930.8200 | www.syncsort.com